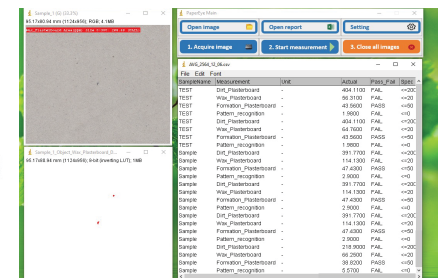


Advantages

-



The diagram illustrates the process of image analysis. It starts with a 'Scanned image' of a textured surface. This image is then processed into four distinct components: 'Dirt', 'Wax spot', 'Uniformity (Formation)', and 'Systematic Pattern'. A large blue arrow points from the 'Scanned image' to the 'Dirt' component, indicating the initial analysis step.

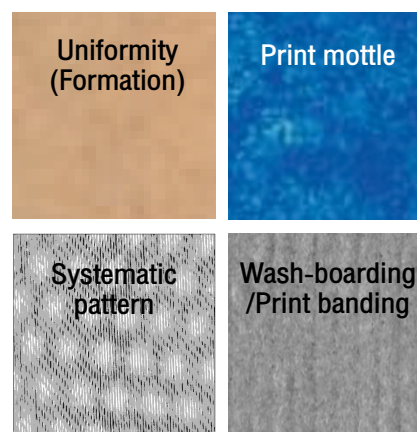
Applications

-

Example of object detection

- **Surface uniformity (available module)**

- Paper surface uniformity (surface formation)
- Coating uniformity
- Print mottle
- Systematic pattern such as couch and wire marking on the surface
- Wash-boarding and print banding of corrugated board
- Other customized measurements is available upon request



Example of surface uniformity

PRECISEPRO : Image Analysis Software

- **User friendly**

- Easy to use for routine quality control and also great tools for problem analysis
- Test results are saved in CSV format and can be opened in MS Excel
- Auto generated test report in PDF format

Convenient

- Selectable measurement modules of your needs or request new measurements to match your specific quality problems
- Software is designed for easily setup new test methods for specific needs
- Multiple measurements in single scan and compared with specifications for pass/fail decision
- No need to purchase specific testers (ex. dirt and formation) separately
- Run-through mode for measuring multiple images in the folder to save measurement time

Reliable and Powerful

- T563 pre-calibrated
- Already proven installments

System and Connection

- High quality flatbed scanner with TAPPI-T563 pre-calibrated. Maximum resolution 6400 dpi.
- Scanning Speed for A4 sheet: approx. 7 sec for 150 dpi, 10 sec for 300 dpi and 25 sec for 600 dpi Runs on PC with windows 7 and up